

Noble
Township
Branch Co.
Michigan

BOWDISH 80-ACRE FARM

Fawn
River
Frontage

REAL ESTATE AUCTION

The farm is located approximately 5 miles southwest of Bronson, MI on US 12 to St. Joseph Rd. (Branch County – St. Joseph County line), then south 3 miles to Round Lake/Fawn River Rd., then east ¼ mile to Dauber Rd., then south ¾ mile to Binkley Rd., then east ¼ mile to the farm or 1 mile east of Brighton, IN to CR 700E, then north 3½ miles to Binkley Rd., then east ¼ mile (Address: 1231 Binkley Rd., Burr Oak, MI) on:

Saturday, January 21, 2012

Beginning at 11:00 a.m.

**Sale to be held at the
Masonic Hall in Bronson,
MI, just east of McDonalds
on US 12. Watch for signs.**

**80 Acres • Farmhouse & Outbuildings
Tillable Land & Hunting Grounds**

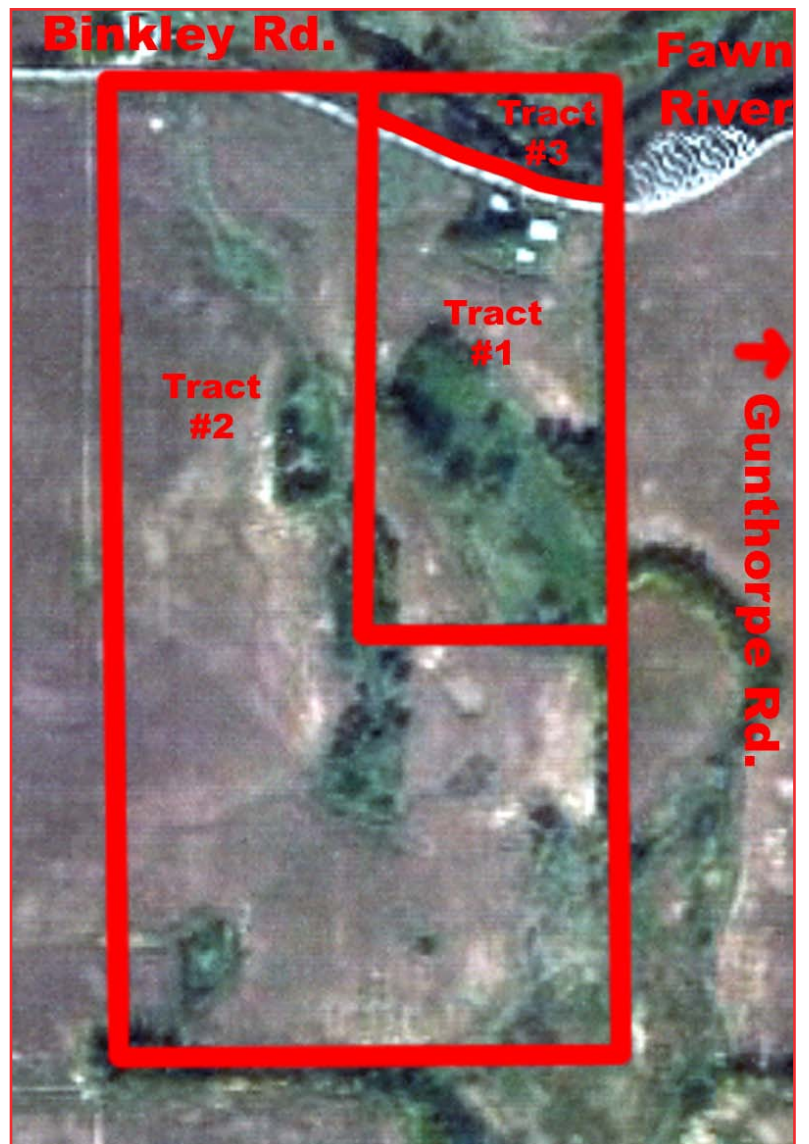
Tract #1: Approximately 18½ acres with 1½ story farmhouse & 2 pole barns, 9 acres tillable.

Tract #2: Approximately 57½ acres with approximately 47½ acres tillable. Frontage on Binkley Road.

Tract #3: Approximately 4 acres on the north side of Binkley Road. The Fawn River runs through this beautiful recreation tract.

Terms: 10% down day of sale with balance in 30 days. Real estate taxes to be prorated as of closing date. Possession on final settlement. Seller reserves the right to accept or reject any and all bids.

For more information contact Jeff Burlingame at 260-499-1083 or Jerry Grogg at 260-499-0474 or the office at 463-2828 or 1-800-548-9905.



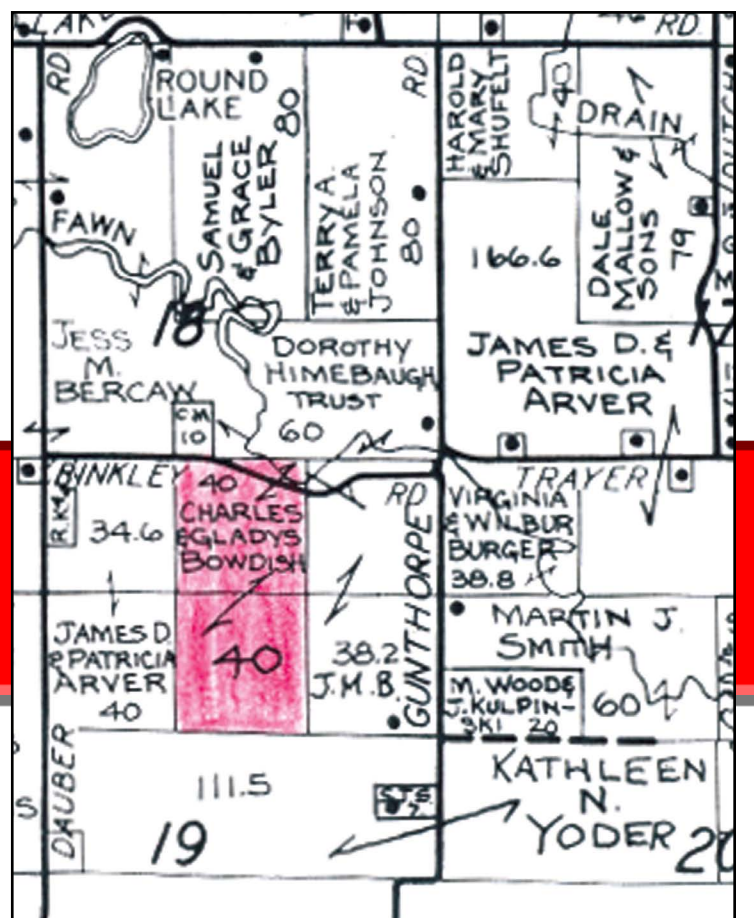
OPEN HOUSE:

Saturday, December 31

from 10 a.m. to 1 p.m.

GLADYS BOWDISH ESTATE

Porter Bowdish & Cheryl Johnson,
Executors



Jerry O. Grogg	AU01002223	LaGrange	260-499-0474
Dallas Martin	AU01029776	Topeka	260-463-6173
Jeff Burlingame	AU19300021	Angola	260-499-1083
Robert Mishler	AU08701553	LaGrange	260-336-9750

Visit us on the web at www.jerrygrogg.com

402 N. Detroit Street • LaGrange, IN 46761-0067